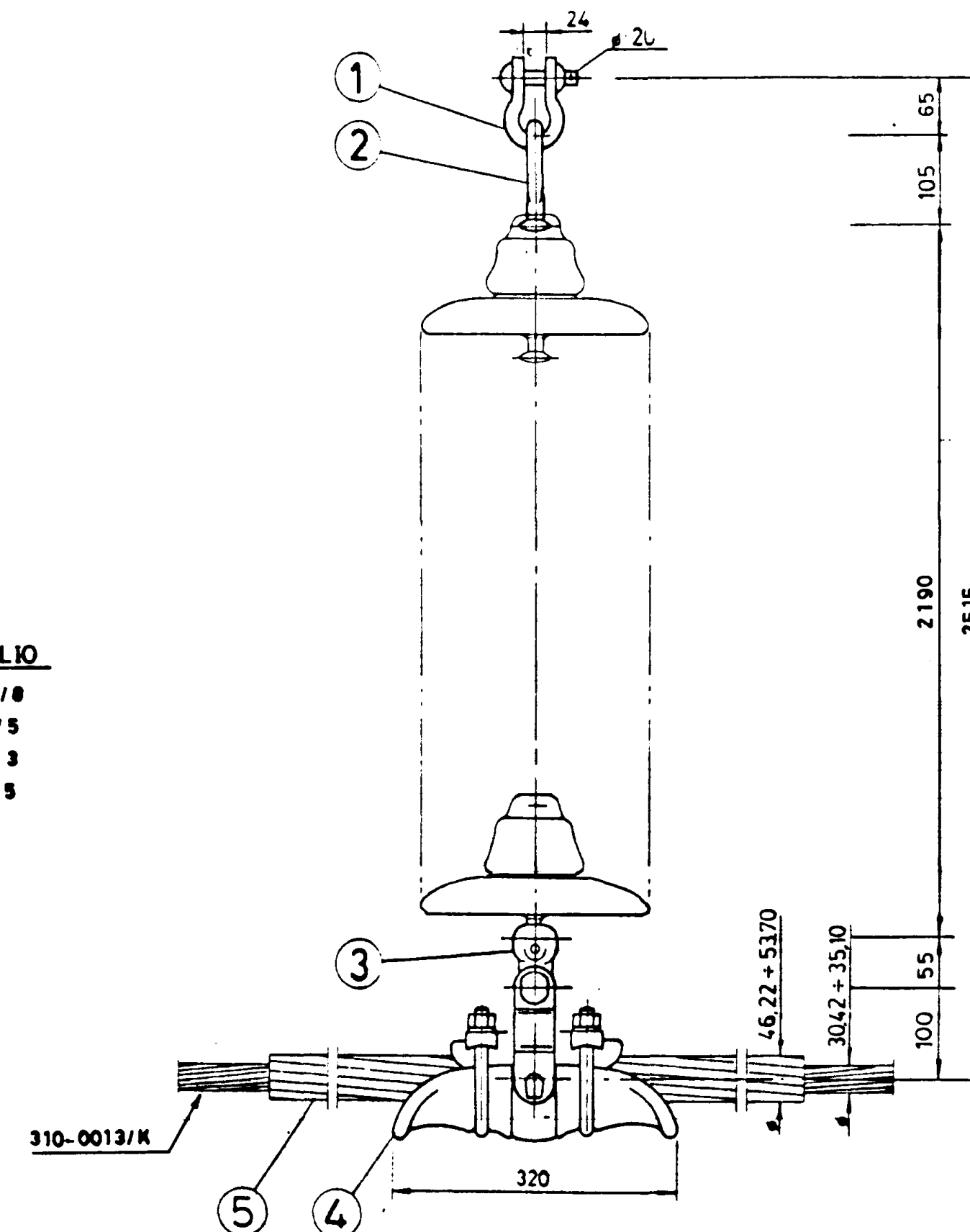


MINIMUM BREAKING STRENGTH 40000 lbs

ITEM	DE DENOMINAZIONE	N°	MATERIALE	N° DISEÑO PARTICOLARE	NOTE
4	shackle	1	d.f.s. 2713-004	h.d.g.	330-0805/8
3	strain clamp	1	alum.alloy 1215AG-002	h.d.g.	210-1250/5
2	long socket eye	1	d.f.s. 2416/52-8	h.d.g.	210-1251/3
1	long ball eye	1	d.f.s. 21113	h.d.g.	210-1202/5
220 KV TRANSMISSION LINE					
single tension set for conductors from 26 to 36 mm. dia.					
4188L13-84					

where not specified dimensional tolerances are ±3%

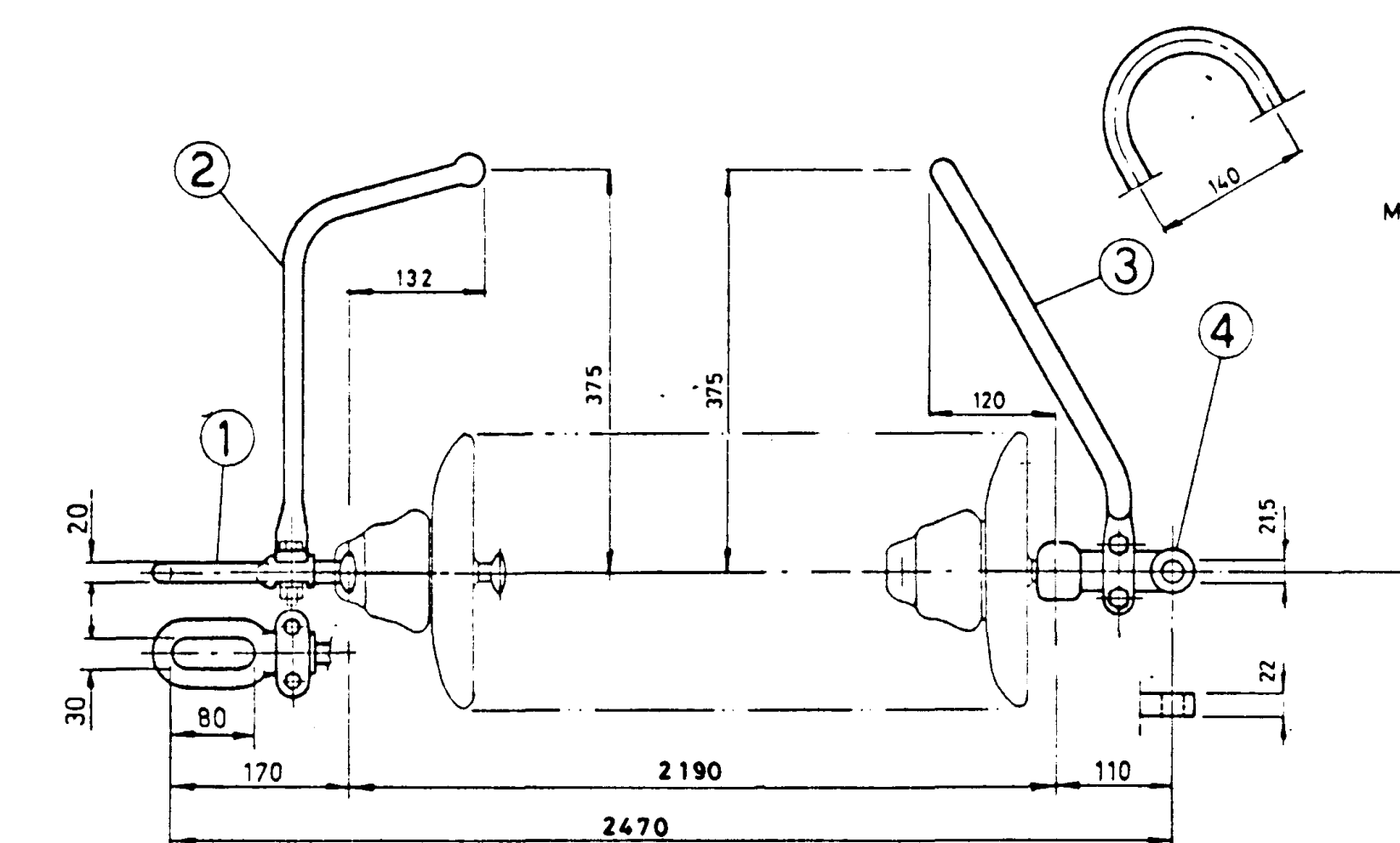
GRUPPO-FOLIO
330-0805/8
210-1250/5
210-1251/3
210-1202/5



MINIMUM BREAKING STRENGTH 30000 lbs

ITEM	DE DENOMINAZIONE	N°	MATERIALE	N° DISEÑO PARTICOLARE	NOTE
5	preformed armor rods	1	alum.alloy RA 3262/2000	h.d.g.	330-1067/2
4	suspension clamp	1	alum.alloy 1253-AP-006	h.d.g.	330-0001/4
3	socket-eye	1	d.f.s. 2422	h.d.g.	210-1255/6
2	ball-eye	1	d.f.s. 2125	h.d.g.	210-1254/8
1	shackle	1	d.f.s. 2713-004	h.d.g.	330-0805/8
220 KV TRANSMISSION LINE					
single suspension set for conductor from 30.42 to 35.10 mm. dia.					
4188L1-84					

G-F

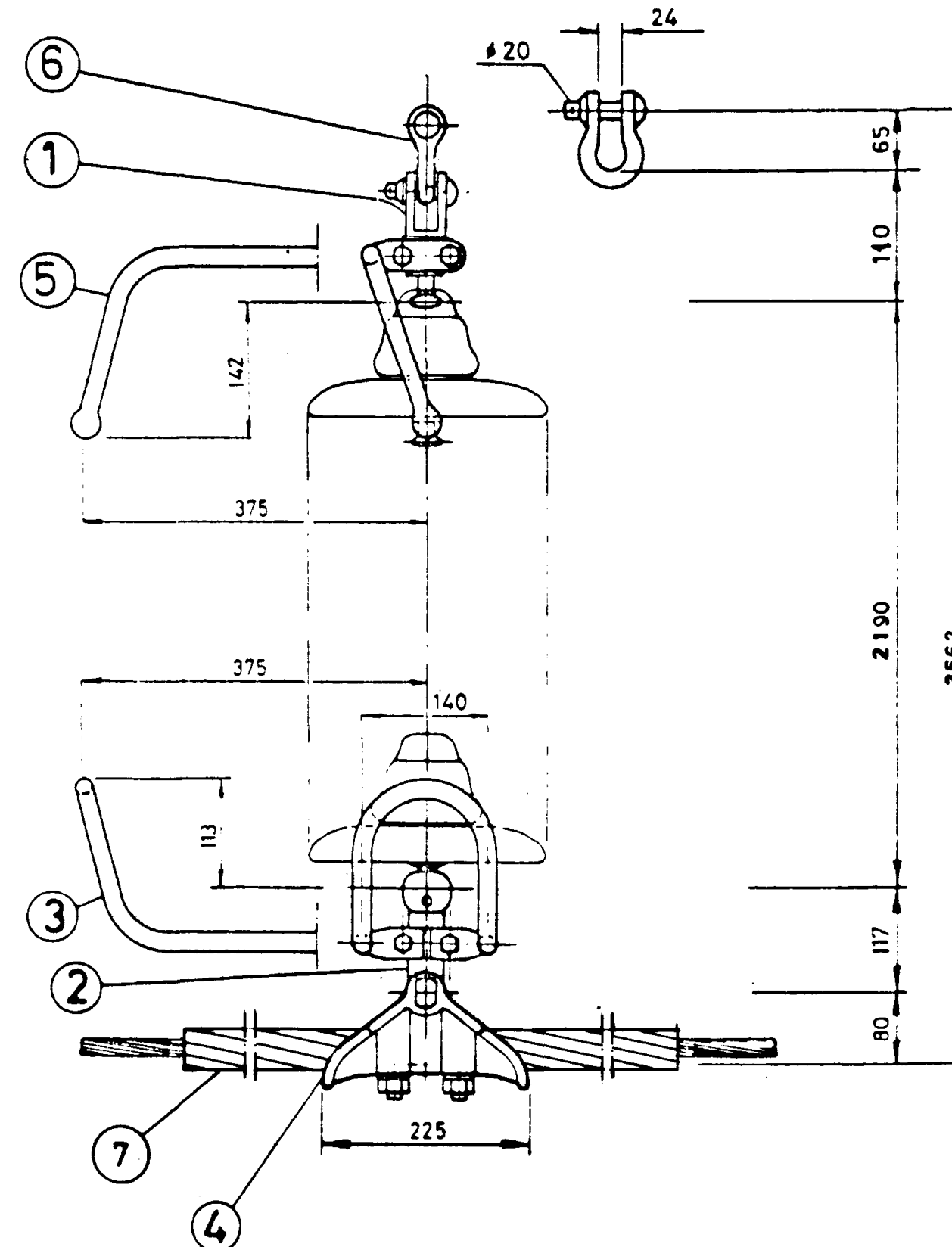


MINIMUM BREAKING STRENGTH 40000 lbs

ITEM	DE DENOMINAZIONE	N°	MATERIALE	N° DISEÑO PARTICOLARE	NOTE
4	long socket-eye	1	d.f.s. 2416/52-8	h.d.g.	210-1251/3
3	bottom arcing horn	1	steel tube 411 L 52	h.d.g.	210-1205/0
2	upper arcing horn	1	steel 411 D 19	h.d.g.	210-1203/3
1	long ball eye	1	d.f.s. 21113	h.d.g.	210-1202/5
220 KV TRANSMISSION LINE					
single tension set					
4318L-41-3					

G-F

210-1251/3
210-1205/0
210-1203/3
210-1202/5

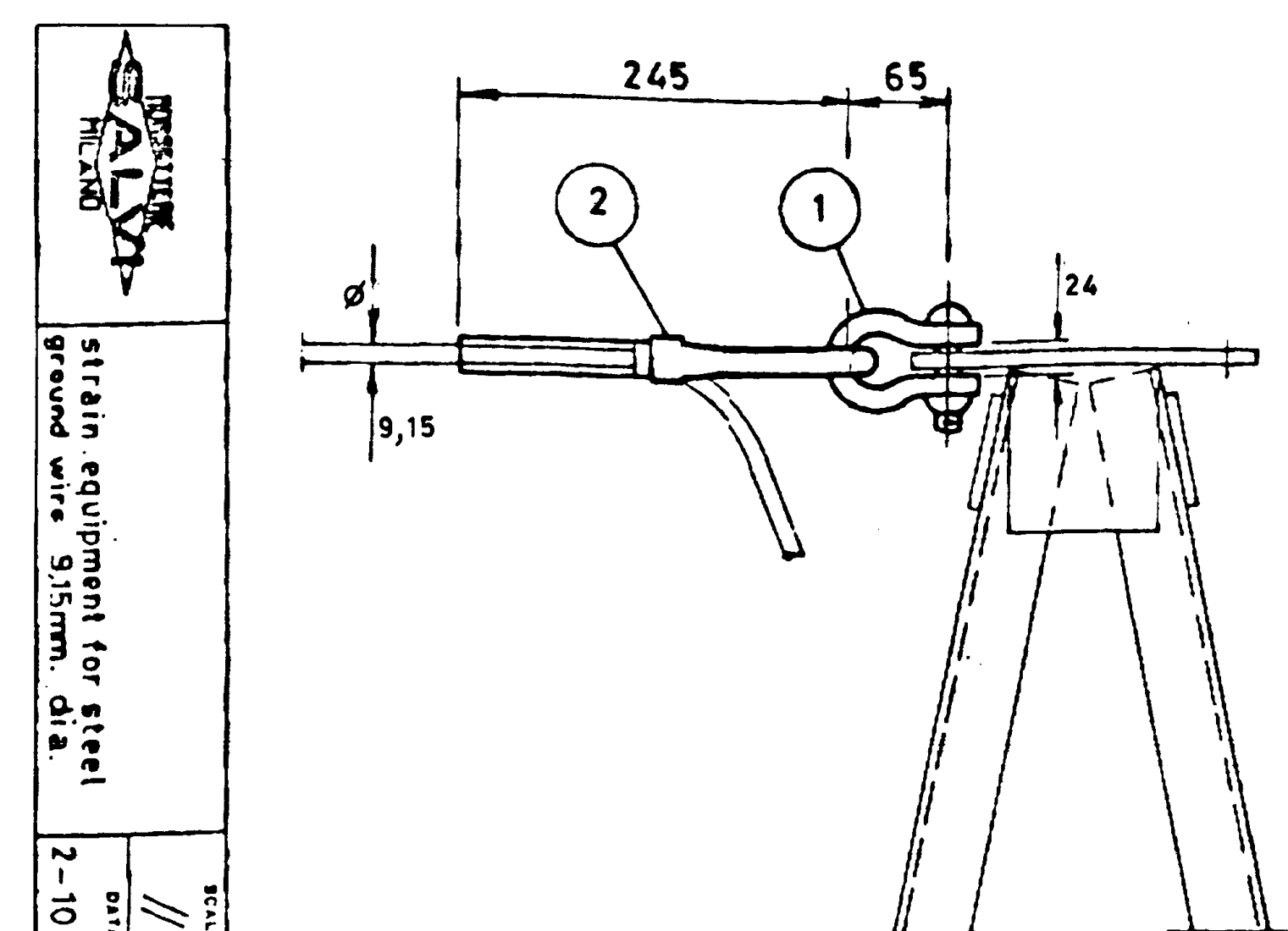


MINIMUM BREAKING STRENGTH:
ITEMS 1-2: 30000 lbs
ITEM 4 = 17500 lbs

ITEM	DE DENOMINAZIONE	N°	MATERIALE	N° DISEÑO PARTICOLARE	NOTE
7	PREFORMED ARMOR RODS	1	alum.alloy RA 3262/2000	h.d.g.	330-1067/2
6	shackle	1	d.f.s. 2713-004	h.d.g.	330-0805/8
5	upper arcing horn	1	steel 411 D 19	h.d.g.	210-1203/3
4	suspension clamp	1	alum.alloy 1253-AP-006	h.d.g.	330-0001/4 (VER NOTA 1)
3	bottom arcing horn	1	steel 411 M 115	h.d.g.	210-1205/0
2	long socket-eye	1	d.f.s. 2433	h.d.g.	210-1208/4
1	long ball-eye	1	d.f.s. 2125-004	h.d.g.	210-1206/8
220KV TRANSMISSION LINE					
single suspension set for conductors from 25 to 37 mm dia.					
4318L16-17					

G-F

330-1067/2
330-0805/8
210-1203/3
330-0001/4 (VER NOTA 1)
210-1205/0
210-1208/4
210-1206/8



die for hexagonal compression cat. no. 591M-025

ITEM	DE DENOMINAZIONE	N°	MATERIALE	N° DISEÑO PARTICOLARE	NOTE
2	compression dead end	1	stainless steel	72831-B-7	330-0268/1
1	shackle with 16 rivet	1	d.f.s. 2713-002	h.d.g.	330-0282/3

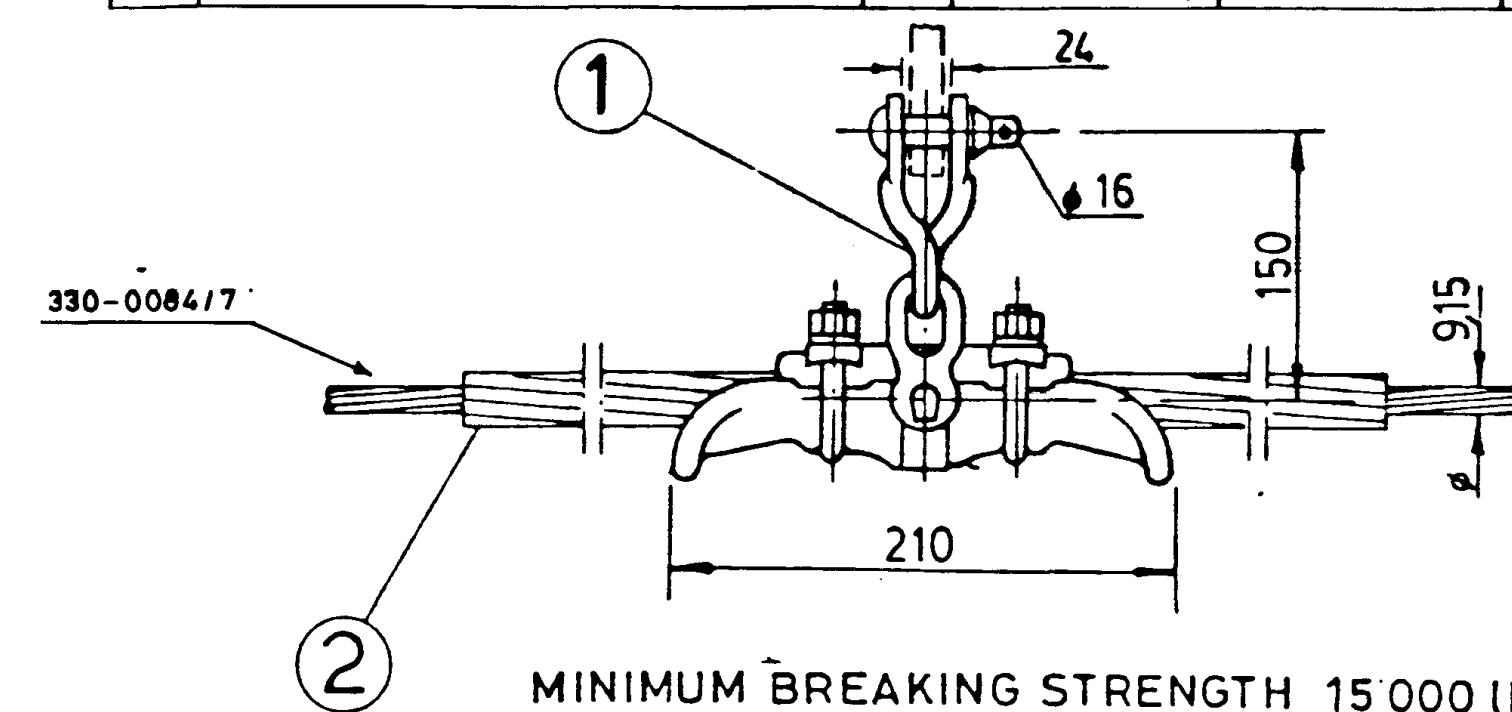
G-F

330-0268/1
330-0282/3

ITEM	DE DENOMINAZIONE	N°	MATERIALE	N° DISEÑO PARTICOLARE	NOTE
1	suspension clamp	1	alum.alloy 1215AG-002	h.d.g.	330-0249/1
2	preformed armor rods	1	alum.alloy RA0915/1000	h.d.g.	330-1068/8

G-F

330-0249/1
330-1068/8



MINIMUM BREAKING STRENGTH 15 000 lbs

ITEM	DE DENOMINAZIONE	N°	MATERIALE	N° DISEÑO PARTICOLARE	NOTE
1	suspension assembly for steel ground wire 9.15 mm dia	1	alum.alloy 1215AG-002	h.d.g.	330-0084/7

G-F

330-0084/7

NOTAS

- EN TORRES DE ANCLAJE, LAS CADENAS DE SUSPENSION NO TIENEN PREFORMADA, DEBERA USARSE GRAMPA G-F: 210-1253/0
- EN TORRES DE SUSPENSION, LAS CADENAS DE AISLACION TIENEN PREFORMADA.

LINEA 220 KV ALTO JAHUEL-LOS ALMENDROS
HERRAJES
DETALLES

COMPANIA CHILENA METROPOLITANA
DE DISTRIBUCION ELECTRICA S.A.

ESCALA
PROY. HBB
DET.
DIB.

CCE-18595

88-04-14

LAMINA 1 DE 4

N°	UBIC.	FECHA	MODIFICACIONES	PROY. DIB.	REV.	APROB.
1						
2						
3						
4						
5						
6						
7						
8						
9						
10						
11						
12						
13						
14						
15						
16						
17						
18						